

## NEWS &amp; TRENDS

# 7 Things to Know About Lilibet 'Lili' Diana Mountbatten-Windsor's Astrology

Here's what the sky has to say about Meghan Markle and Prince Harry's second child born on June 4.

By [Maressa Brown](#) | Published on June 8, 2021



PHOTO: GETTY IMAGES. ART: JILLIAN SELLERS.

Meghan Markle and Prince Harry's second child Lilibet 'Lili' Diana Mountbatten-Windsor arrived on June 4 at 11:40 a.m. local time. Back in March, the Duke and Duchess of Sussex revealed to [Oprah Winfrey](#) that they were expecting a girl in the "summertime," and ever since, royal watchers have waited to see which sign [Archie's](#) baby sister would be born under. Now, we have our answer, and it's Gemini.

But there's more to Baby Lili's astrology than her sun sign, and it turns out she has quite a bit in common with other family members-especially her late grandmother, Princess Diana, after whom she's named.

Here are seven facts about the royal newborn's astrology.

**RELATED:** [Meghan Markle Gives Birth to a Baby Girl](#)

## **1. Baby Lili shares her sun and rising signs with her late great grandfather Prince Philip Duke of Edinburgh.**

Lili's late great-grandfather, Prince Philip, was also born with his sun (the sign that helps shape our confidence and purpose) in Gemini and rising sign or ascendant (how we present ourselves to the world) in fixed fire sign Leo. Gemini is ruled by Mercury, the planet of communication, and Leo is ruled by the sun. This combo led Prince Philip to being seen as a charismatic communicator, eager to use the new medium of television to support his royal duties and modernize the monarchy.

## **2. Lili is a double Gemini.**

Both the sun and Mercury were in the air sign when Lili was born, making communication an integral part of her life. In fact, her north node, which speaks to the karmic journey she's on in this lifetime, is also in Gemini, in her tenth house of career and public image. That means mastery of language, public speaking, and harnessing the power of technology could be at the heart of her professional path.

## **3. Lili has an emotional water sign connection with Meghan and her late grandmother Princess Diana.**

The Princess of Wales was born with her sun (symbolizing core identity) and Mercury (influencing how we think and express ourselves) in the cardinal water sign Cancer. That combo helped her talk about sensitive, emotional subjects like the AIDS epidemic and battling poverty and homelessness. Cancer is also ruled by the maternal moon, so it's no wonder proud mom Diana once said she "lived for" her sons.

As for Meghan, her Mars (which colors our energy and how we take action) and rising sign are both in Cancer too.

Now, Lili, named in part for her beloved, late grandmother, was born with her Mars and Venus (which influences how you approach relationships) in Cancer. She'll take action and express her love in a similar way to her mom and her late grandmother.

**RELATED:** [8 Facts About Royal Baby Archie's Astrology](#)

## **4. She'll be drawn to working on humanitarian causes like Princess Diana.**

Diana's moon was in Aquarius, a fixed air sign known for being future-minded, rebellious, and prioritizing the greater good of community over the

individual. Saturn-the planet of authority and tough challenges-was retrograde in Aquarius when Lili was born.

It'll come back around to this exact point when she is 29 or 30 years old, and that's when she'll experience her Saturn return, a major astrological inflection point that will color how she moves forward into adult life. That's when she'll be thinking of ways she can devote herself to humanitarian, charitable causes while possibly striking out on her own against structures that no longer resonate with her.

## **5. Chances are, Lili will be very close with Archie.**

Although Archie was born on May 6, making him a Taurus (just like Queen Elizabeth and his first cousins Princess Charlotte and Prince Louis), he has both his moon sign (aka his astrological emotional compass) and Mars in Gemini. The siblings should have an immediate, strong, heartfelt bond. The way Archie experiences emotion, cares for the people he loves, and wants to be nurtured is in sync with Lili's core identity. Plus, the way he takes action is in sync with her communication style, so they'll enjoy a fun, intellectually-charged, chatty connection.

And if that wasn't enough, both Archie's Venus and Lili's moon are in go-getter fire sign Aries, meaning they'll genuinely love spending time together and be in sync on how they like to pass the time-likely by enjoying competitive, spirited adventures.

## **6. Lili brings a bit more fire into the family.**

Harry's Mars is in mutable fire sign Sagittarius, known for acting in a free-spirited, unfiltered way and experiencing lots of wanderlust. And Meghan was born with both her sun and Mercury in Leo, which makes her vivacious and confident, especially in terms of expressing her thoughts and opinions. And as previously noted, Archie and Lili bring a dose of competitive Aries to the table. All this fire means they will absolutely be a family of the world who has their fair share of sparky interactions and head-butting.

**RELATED:** [An Ode To Meghan Markle as a Mom: You Deserve All the Help You Need](#)

## **7. She'll experience spiritual growth and creative fulfillment through her relationships.**

Lili was born with her Jupiter (which oversees fortune, growth, and fulfillment) in empathic water sign Pisces, and it forms a harmonizing angle to her Venus, making her relationships a heartwarming focal point of her life and how she'll experience luck. Ruled by the planet of spirituality Neptune, Pisces is also incredibly compassionate and meditative. Like her late grandmother, Lili has the potential to be a healing force-and she might

notice this especially around the time she's 12 or 24.

Was this page helpful?



## Related Articles



CELEBRITY PARENTS

### All About Meghan Markle's Second Pregnancy

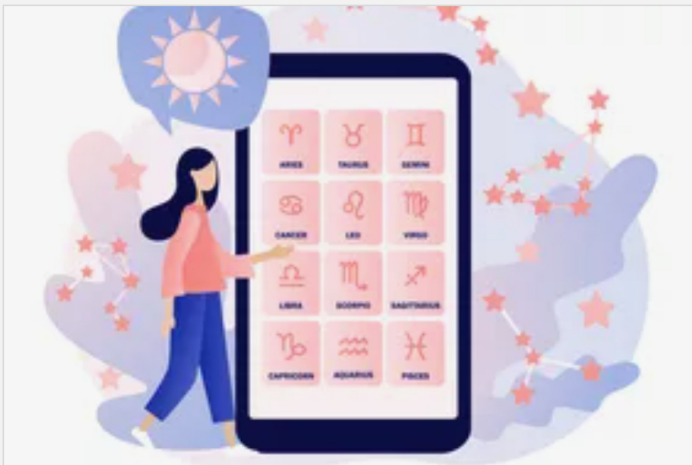
By Maressa Brown



SOCIAL DEVELOPMENT

### What Your Baby's Astrological Sign Might Say About Her Personality

By Maressa Brown



NEWS & TRENDS

### Does Your Child's Astrological Sun Sign Determine if They Will Become a Child Star? This Poll Says Yes

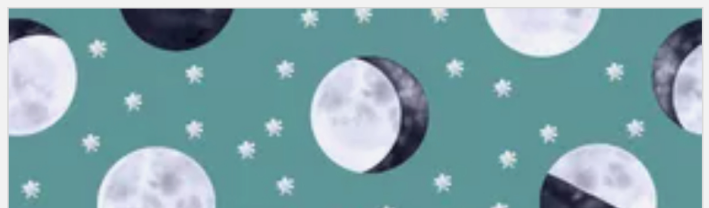
By Maressa Brown

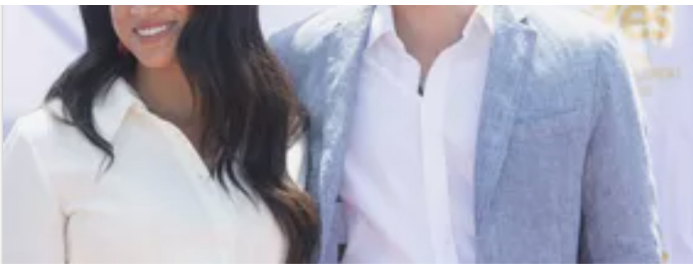


NEWS & TRENDS

### Meghan Markle Is Being Mom-Shamed for the Way She Held Baby Archie

By Parents Editors





NEWS & TRENDS

## Meghan Markle's Daughter Has the Coolest Name

By Maressa Brown



NEWS & TRENDS

## What March 2022's New Moon Means for Parents and Kids

By Maressa Brown



CELEBRITY PARENTS

## Everyone is So Excited at the Possibility of a ScarJost Baby

By Maressa Brown



NEWS & TRENDS

## This Is When We Think Meghan Markle Got Pregnant

By Nicole Harris



PARENTING STYLE

## Your Social Distancing Parenting Style, Based on Your Zodiac Sign

By Maressa Brown



NEWS & TRENDS

## Everything You Need to Know About Meghan and Harry's Royal Baby Name Pick

By Lisa Milbrand



JUST FOR MOM

## What Your Zodiac Sign Says About Your Parenting Style

By Parents Editors



NEWS & TRENDS

## 6 Meghan Markle & Prince Harry Interview Bombshells That Offer Lessons for Parents

By Maressa Brown



MOVIES

## The 50 Best Movies for Kids

By Parents Editors



ADOPTION STORIES

## Celebrity Moms Who Adopted

By Parents Editors



WE ARE FAMILY PODCAST

## We Are Family Podcast, Episode 1: Shaun T & Julia Tell All



READING

## Parents' Raising the Future Book Club

By Parents Editors

# Parents®

NEWSLETTERS

Follow Us



**STARTING A FAMILY**

**PREGNANCY**

**BABIES**

**RAISING KIDS**

**FAMILY LIFE**

**STAYING HEALTHY**

**NEWS & TRENDS**

**YOUR VILLAGE**

About Us

Expert Review Board

Editorial Guidelines

Product Review Guidelines

Diversity Pledge

Privacy Policy


Careers

Terms of Use

Contact

Advertise

Do Not Sell My Personal Information

 Parents is part of the [Dotdash Meredith](#) publishing family.

We've updated our [Privacy Policy](#), which will go in to effect on September 1, 2022. [Review our Privacy Policy](#).